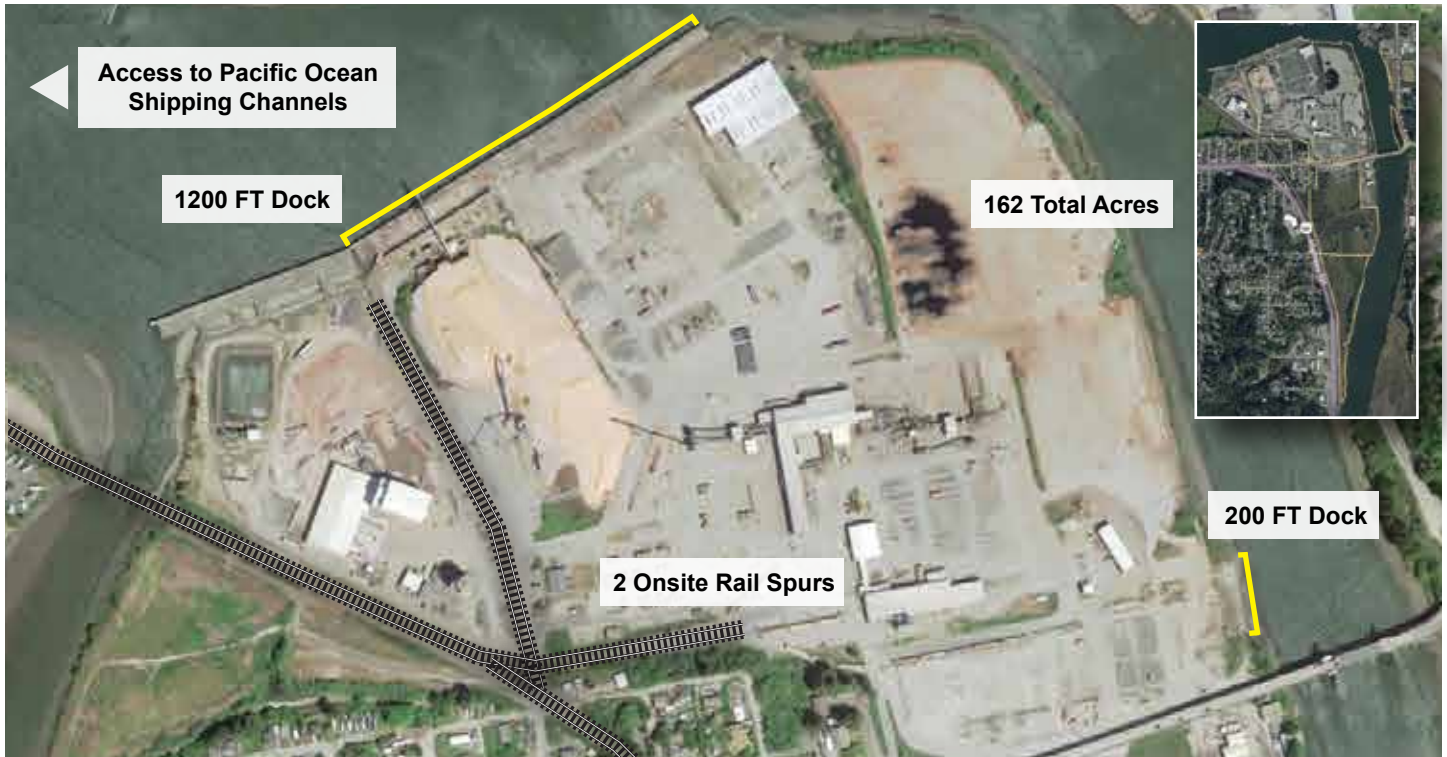


# Prime 162-Acre Waterfront Property Features Access to Ports, Rail, Hwy

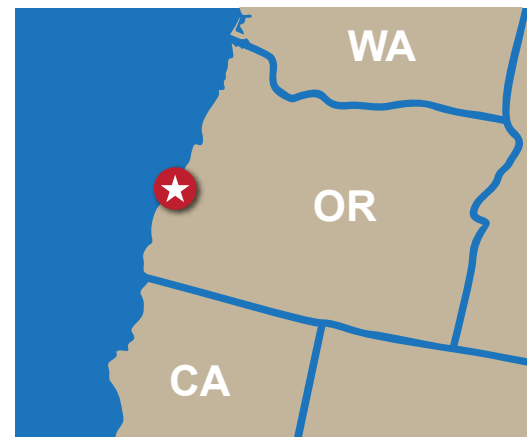
63779 Mullen Street in Coos Bay, Oregon // [View on Google Earth »](#)



## PROPERTY FEATURES

- Deep water port with 1200-ft dock
- 2 private rail spurs connecting to Union Pacific
- Direct access to Pacific Ocean shipping channels
- Located in a Foreign Trade & Enterprise Zone
- Easy access to US Route 101 and local airports
- Lay-down yards from 5 acres to 25 areas
- Access to heavy power
- Secure site with gated access

## PRIME LOCATION



**Port Access** to Pacific Ocean  
**Rail Access** via Coos Bay Rail  
**Road Access** to US Route 101