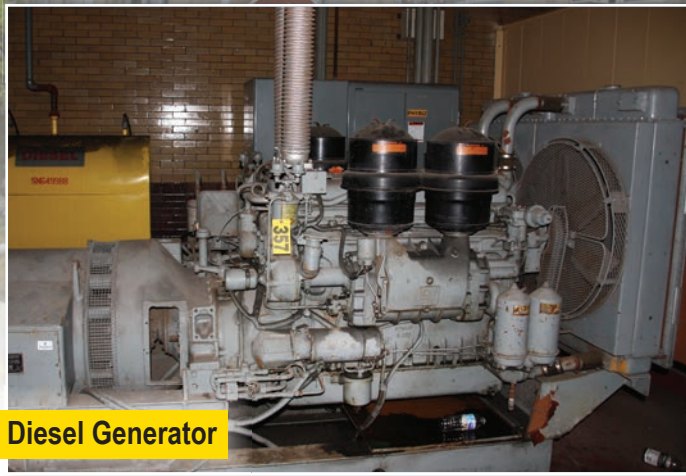




Portable Hydraulic Units



Diesel Generator



19 ITE Circuit Breakers type 15 HK



English Works Boilers Model 80-SLG-250

ONLINE AUCTION

Former GM Plant Assets For Immediate Release!

1000 General Motors Dr. • Janesville, WI 53546

STARTS:

Monday, June 11, 2018 at 9:00 am CDT

ENDS:

Friday, June 15, 2018 at 12:00 pm CDT

Featuring but not limited to:

- English Works Boilers: Richmond Virginia Models 80-SLG-250
- Sellers Boilers: Model S-500-W-15
- Primary Sub Station: GE Magne Blast Circuit Breakers / ITE Circuit Breakers type 15 HK
- ABB transformers NEMA Class AA Dry Type
- Air Compressors ▪ Diesel Generator ▪ Gorbelt Jib Crane
- Aisle Crossing Arms ▪ Portable Hydraulic Units
- Reuland Magnetic Brakes ▪ Chillers
- 2200 ft of 1600 AMP all Copper Buss Way complete with disconnects, curves and 4-way boxes on skids, ready for pick up . . . *and much more!*

2 Options For Preview & Inspection

By Appointment Only: Mon., June 11 Thru Wed., June 13

Onsite Inspection: Thurs., June 14 (No Appt. Needed)

Contact Lloyd at 608-289-0051



Register Today!

Asset Recovery Management By:



1650 Des Peres Rd #303, St. Louis, MO 63131
www.cdcco.com/industrial-asset-recovery-group-llc
Phone: (314) 835-1515 • Fax: (314) 835-1616

Register to bid at aucto.com

Contact Neil for bidding info at 314-719-7806 / nkruel@industrial-recovery.com

