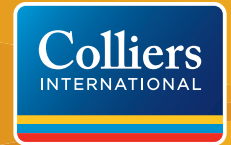


FOR SALE OR LEASE > ±58 ACRES - DIVISIBLE



Deep Water Multi-Modal Terminal

202 OXNARD DRIVE, PORT WENTWORTH, GA 31407



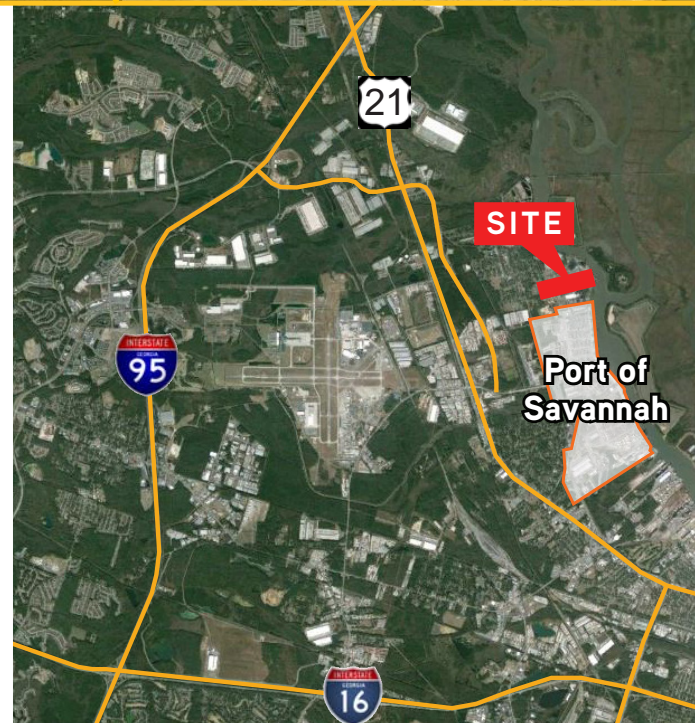
Deep Water Multi-Modal Terminal

- > ±58 acres, divisible
- > ±800' of frontage on Savannah River Shipping Channel
- > Rail serviced by Norfolk Southern
- > Heavy Industrial Zoning
- > Lease divisible to 5 Acres
- > Located 1.4 miles from the Georgia Ports Authority's Main Gate
- > Ideal location for a multi-modal shipping terminal, bulk transfer facility, marine terminal, container/chassis equipment storage, aggregates, tank farm, lumber export and much more

Pricing

SALE PRICE > \$16,500,000

LEASE RATE > Please Inquire



JOHN L. NEELY, SIOR
912 662 8008
SAVANNAH, GA
john.neely@colliers.com

DANNY S. CHASE, SIOR
912 662 8012
SAVANNAH, GA
danny.chase@colliers.com



FOR SALE OR LEASE > ±58 ACRES - DIVISIBLE

Deep Water Multi-Modal Terminal

202 OXNARD ROAD, PORT WENTWORTH, GA 31407



Property Highlights

- SIZE > ±57.66 Acres - Divisible
- LOCATION > 202 Oxnard Drive, Port Wentworth, Georgia 31407
- ACCESS > I-16 and I-95 located just minutes away
- PIN # > 1-0728-01-001
- ZONING > I-H, Heavy Industrial Zoning District, Chatham Co.
- RAIL > Rail spur serviced by Norfolk Southern
- FLOOD ZONE > Zone AE (Elevation 11). FEMH FIRM NO. 130030 004D C
Map #: 45019C0315J - Dated Nov. 17, 2004

Uses

- > Multi-modal shipping terminal
- > Bulk transfer facility
- > Marine terminal
- > Container/chassis equipment storage
- > Aggregates
- > Tank Farm
- > Lumber Export

JOHN L. NEELY, SIOR
912 662 8008
SAVANNAH, GA
john.neely@colliers.com

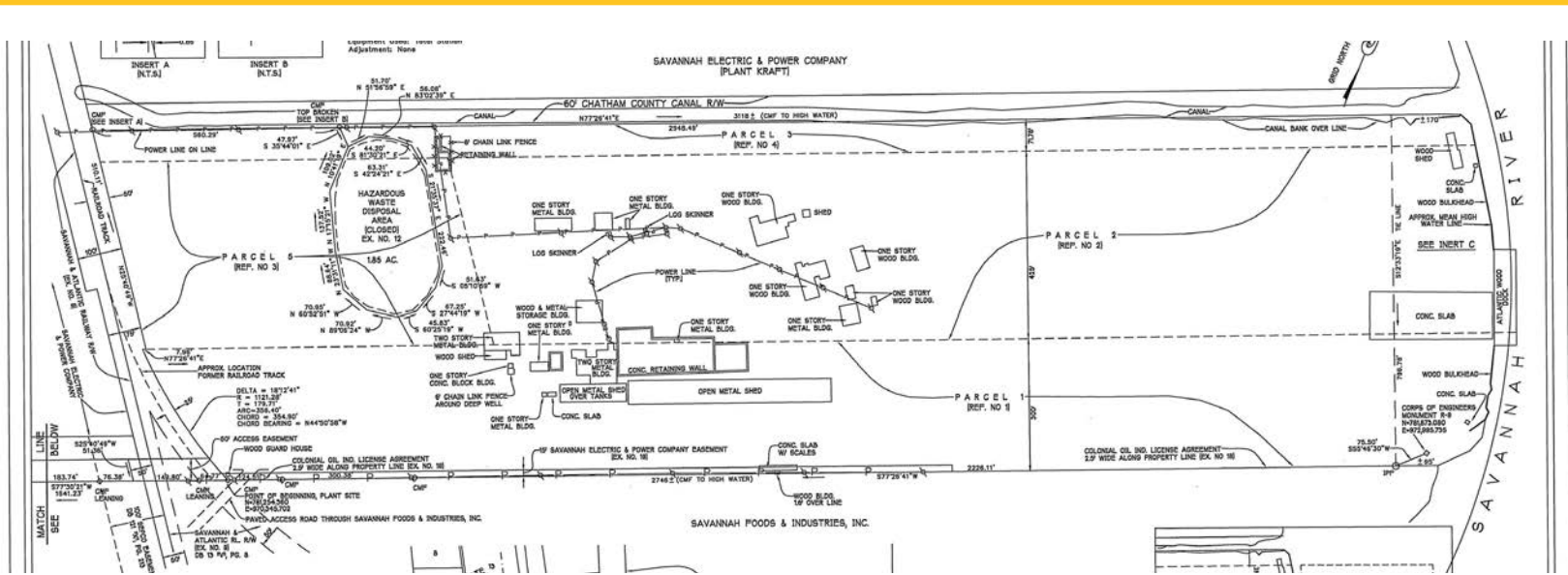
DANNY S. CHASE, SIOR
912 662 8012
SAVANNAH, GA
danny.chase@colliers.com



FOR SALE OR LEASE > ±58 ACRES - DIVISIBLE

Deep Water Multi-Modal Terminal

202 OXNARD ROAD, PORT WENTWORTH, GA 31407



[SITE IMPROVEMENTS >](#)

[SCALE >](#)

[ELECTRICAL SERVICE >](#)

[WATER >](#)

[SEWER >](#)

[GAS >](#)

[STEAM >](#)

[SITE PERMITS & LICENSE >](#)

[AIR PERMIT >](#)

[NPDES DISCHARGE PERMIT >](#)

[NPDES STORMWATER PERMIT >](#)

[SOLID WASTE TRANSFER STATION PERMIT >](#)

[EPA SITE NUMBER >](#)

[FIRE PROTECTION PROVIDER >](#)

[FIRE PROTECTION RATING >](#)

8 buildings totaling approximately 31,775 SF (can be removed)

Truck scale available for tenant use

115 and 46 KVA serviced by Georgia Power

46" water main at entrance; permitted on-site well (capacity 10,000 gals/day)

Septic system for offices. Lift station 150' west of site along railroad tracks

High Pressure main at entrance provided by Southern Natural Gas

Potential access from GA Power and Imperial Sugar

RCRA Part B Post Closure Permit: HW-055(D)

2491-051-0047-B-01-0

GA0047783

GA000000

PBR-025-46TS

GAD 084914787

City of Port Wentworth

Class 5

JOHN L. NEELY, SIOR
912 662 8008
SAVANNAH, GA
john.neely@colliers.com

DANNY S. CHASE, SIOR
912 662 8012
SAVANNAH, GA
danny.chase@colliers.com

